

FLOW OAK STAND TWO TIER 1.2



Flow Oak Stand Two Tier 1.2

Product Code: BU_RS001

Material: Oak, Oiled

Dimensions: 309 x 323 x 441 mm

12.1 x 9.1 x 17.4"



Craster creates innovative luxury product ranges for premium Hotel, Retail and Restaurant groups. We bring together exceptional design and manufacturing talent and offer a complete product development solution from the inception of the idea to delivery of the product.

All Designs and Images are the sole property of Craster, Ltd.

Email: info@craster.com
Web: www.craster.com
Tel: +44 (0) 203 004 4750

Craster Company info:
VAT Reg No. 599599046
Registered in England
Company No: 4503732

craster

FLOW STANDS



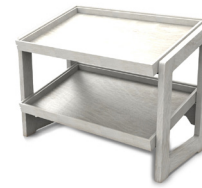
Flow Oak Stand Two Tier 1.1

Product Code: BU_RS002
Material: Oak, Oiled
Dimensions: 574 x 323 x 441 mm
22.6 x 12.7 x 17.4"



Flow Walnut Stand Two Tier 1.1

Product Code: BU_RS012
Material: Walnut, Lacquered
Dimensions: 574 x 323 x 441 mm
22.6 x 12.7 x 17.4"



Flow White-Washed Stand Two Tier 1.1

Product Code: BU_RS042
Material: White-Washed, Lacquered
Dimensions: 574 x 323 x 441 mm
22.6 x 12.7 x 17.4"



Flow Black Stand Two Tier 1.1

Product Code: BU_RS032
Material: Black, Lacquered
Dimensions: 574 x 323 x 441 mm
22.6 x 12.7 x 17.4"



Flow Oak Stand Two Tier 1.2

Product Code: BU_RS001
Material: Oak, Oiled
Dimensions: 309 x 323 x 441 mm
12.1 x 9.1 x 17.4"



Flow Walnut Stand Two Tier 1.2

Product Code: BU_RS011
Material: Walnut, Lacquered
Dimensions: 309 x 323 x 441 mm
12.1 x 9.1 x 17.4"



Flow White-Washed Stand Two Tier 1.2

Product Code: BU_RS041
Material: White-Washed, Lacquered
Dimensions: 309 x 323 x 441 mm
12.1 x 9.1 x 17.4"



Flow Black Stand Two Tier 1.2

Product Code: BU_RS031
Material: Black, Lacquered
Dimensions: 309 x 323 x 441 mm
12.1 x 9.1 x 17.4"