

## FLOW WALNUT STAND TWO TIER 1.2



### Flow Walnut Stand Two Tier 1.2

Product Code: BU\_RS011

Material: Walnut, Lacquered

Dimensions: 309 x 323 x 441 mm  
12.1 x 9.1 x 17.4"

Craster creates innovative luxury product ranges for premium Hotel, Retail and Restaurant groups. We bring together exceptional design and manufacturing talent and offer a complete product development solution from the inception of the idea to delivery of the product.

All Designs and Images are the sole property of Craster, Ltd.

Email: [info@craster.com](mailto:info@craster.com)  
Web: [www.craster.com](http://www.craster.com)  
Tel: +44 (0) 203 004 4750

Craster Company info:  
VAT Reg No. 599599046  
Registered in England  
Company No: 4503732

craster

## FLOW STANDS



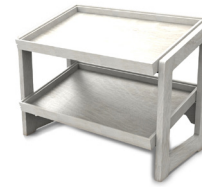
### Flow Oak Stand Two Tier 1.1

Product Code: BU\_RS002  
Material: Oak, Oiled  
Dimensions: 574 x 323 x 441 mm  
22.6 x 12.7 x 17.4"



### Flow Walnut Stand Two Tier 1.1

Product Code: BU\_RS012  
Material: Walnut, Lacquered  
Dimensions: 574 x 323 x 441 mm  
22.6 x 12.7 x 17.4"



### Flow White-Washed Stand Two Tier 1.1

Product Code: BU\_RS042  
Material: White-Washed, Lacquered  
Dimensions: 574 x 323 x 441 mm  
22.6 x 12.7 x 17.4"



### Flow Black Stand Two Tier 1.1

Product Code: BU\_RS032  
Material: Black, Lacquered  
Dimensions: 574 x 323 x 441 mm  
22.6 x 12.7 x 17.4"



### Flow Oak Stand Two Tier 1.2

Product Code: BU\_RS001  
Material: Oak, Oiled  
Dimensions: 309 x 323 x 441 mm  
12.1 x 9.1 x 17.4"



### Flow Walnut Stand Two Tier 1.2

Product Code: BU\_RS011  
Material: Walnut, Lacquered  
Dimensions: 309 x 323 x 441 mm  
12.1 x 9.1 x 17.4"



### Flow White-Washed Stand Two Tier 1.2

Product Code: BU\_RS041  
Material: White-Washed, Lacquered  
Dimensions: 309 x 323 x 441 mm  
12.1 x 9.1 x 17.4"



### Flow Black Stand Two Tier 1.2

Product Code: BU\_RS031  
Material: Black, Lacquered  
Dimensions: 309 x 323 x 441 mm  
12.1 x 9.1 x 17.4"