

## FLOW BLACK STAND TWO TIER 1.1



### Flow Black Stand Two Tier 1.1

Product Code: BU\_RS032

Material: Black, Lacquered

Dimensions: 574 x 323 x 441 mm  
22.6 x 12.7 x 17.4"



## FLOW STANDS



### Flow Oak Stand Two Tier 1.1

Product Code: BU\_RS002  
Material: Oak, Oiled  
Dimensions: 574 x 323 x 441 mm  
22.6 x 12.7 x 17.4"



### Flow Walnut Stand Two Tier 1.1

Product Code: BU\_RS012  
Material: Walnut, Lacquered  
Dimensions: 574 x 323 x 441 mm  
22.6 x 12.7 x 17.4"



### Flow White-Washed Stand Two Tier 1.1

Product Code: BU\_RS042  
Material: White-Washed, Lacquered  
Dimensions: 574 x 323 x 441 mm  
22.6 x 12.7 x 17.4"



### Flow Black Stand Two Tier 1.1

Product Code: BU\_RS032  
Material: Black, Lacquered  
Dimensions: 574 x 323 x 441 mm  
22.6 x 12.7 x 17.4"



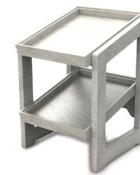
### Flow Oak Stand Two Tier 1.2

Product Code: BU\_RS001  
Material: Oak, Oiled  
Dimensions: 309 x 323 x 441 mm  
12.1 x 9.1 x 17.4"



### Flow Walnut Stand Two Tier 1.2

Product Code: BU\_RS011  
Material: Walnut, Lacquered  
Dimensions: 309 x 323 x 441 mm  
12.1 x 9.1 x 17.4"



### Flow White-Washed Stand Two Tier 1.2

Product Code: BU\_RS041  
Material: White-Washed, Lacquered  
Dimensions: 309 x 323 x 441 mm  
12.1 x 9.1 x 17.4"



### Flow Black Stand Two Tier 1.2

Product Code: BU\_RS031  
Material: Black, Lacquered  
Dimensions: 309 x 323 x 441 mm  
12.1 x 9.1 x 17.4"