

LINE TABLE - TABLE TOPS



1800 Rectangle – Top



Code	Material
CB_TRCF1	HPL, PU Edge
Pack Size	Dimensions
1	1800 × 900 × 25 mm 71 × 35.4 × 1"

1800 Classroom – Top



Code	Material
CB_TCCB1	HPL, PU Edge
Pack Size	Dimensions
1	1800 × 450 × 25 mm 71 × 17.7 × 1"

1800 Trapezoid – Top



Code	Material
CB_TTCF1	HPL, PU Edge
Pack Size	Dimensions
1	1800 × 780 × 25 mm 71 × 30.7 × 1"

1500 Rectangle – Top



Code	Material
CB_TRBE1	HPL, PU Edge
Pack Size	Dimensions
1	1500 × 750 × 25 mm 59 × 29.5 × 1"

1500 Classroom – Top



Code	Material
CB_TCBB1	HPL, PU Edge
Pack Size	Dimensions
1	1500 × 450 × 25 mm 59 × 17.7 × 1"

1500 Trapezoid – Top



Code	Material
CB_TTBE1	HPL, PU Edge
Pack Size	Dimensions
1	1500 × 650 × 25 mm 59 × 25.6 × 1"

Craster creates innovative luxury product ranges for premium Hotel, Retail and Restaurant groups. We bring together exceptional design and manufacturing talent and offer a complete product development solution from the inception of the idea to delivery of the product.

All Designs and Images are the sole property of Craster, Ltd.

Email: info@craster.com
 Web: www.craster.com
 Tel: +44 (0) 203 004 4750

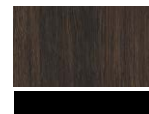
Craster Company info:
 VAT Reg No. 599599046
 Registered in England
 Company No: 4503732

craster

LINE TABLE - TABLE TOPS



PREMIUM - TABLE TOPS AND EDGE



B11
TOBACCO
+ BLACK



B12
WALNUT
+ BLACK



B13
LIGHT WALNUT
+ BLACK



D15
ACACIA
+ GREY



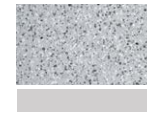
E14
OAK
+ BEIGE



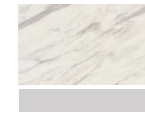
B41
DARK MARBLE
+ BLACK



C44
CONCRETE
+ DARK GREY



D42
TERRAZZO
+ GREY



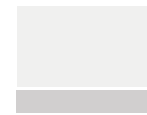
D43
WHITE MARBLE
+ GREY



B31
BLACK



C33
GREY +
DARK GREY



D34
PEARL
+ GREY



E38
BEIGE



F35
CORAL



G36
BLUE



H37
MINT

ESSENTIAL - TABLE TOPS AND EDGE



B01
ÉRABLE
+ BLACK



B02
CHÊNE
+ BLACK



B03
NOYER
+ BLACK



E04
LIGHT CHÊNE
+ BEIGE



B21
BLACK



B22
DARK GREY
+ BLACK



C23
GREY
+ DARK GREY