

TROLLEY - OAK



Trolley - Oak

Product code: TO_LDTNF
Material: Oak, Lacquered
Dimensions: 1075 x 585 x 954 mm
42.3 x 23 x 37.5"

Fits: Craster service Trays
Features: Rubber Bumpers, Locking Castors,
Brushed Stainless Steel Handle
Assembly required

CLASSIC TROLLEYS & TRAYS



Trolley with Folding Sides - Oak

Product code: TO_LDT
 Material: Oak, Lacquered
 Dimensions: 1922 x 585 x 954 mm
 65.7 x 23 x 37.5"

Fits: Craster service Trays



Trolley - Oak

Product code: TO_LDTNF
 Material: Oak, Lacquered
 Dimensions: 1075 x 585 x 954 mm
 42.3 x 23 x 37.5"

Fits: Craster service Trays



Trolley with Folding Sides - Black

Product code: TO_LDTBLK
 Material: Black, Lacquered
 Dimensions: 1922 x 585 x 954 mm
 65.7 x 23 x 37.5"

Fits: Craster service Trays



Trolley - Black

Product code: TO_LDTBNF
 Material: Black, Lacquered
 Dimensions: 1075 x 585 x 954 mm
 42.3 x 23 x 37.5"

Fits: Craster service Trays



2/3 Service Tray

Product code: TA_LDT002
 Material: Oak, Lacquered
 Dimensions: 542 x 422 x 50 mm
 21.3 x 16.6 x 2"

Compatible with TO_LTD / TO_LDTBLK



1/3 Service Tray

Product code: TA_LDT003
 Material: Oak, Lacquered
 Dimensions: 442 x 271 x 50 mm
 16.6 x 10.7 x 2"

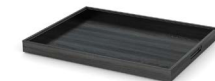
Compatible with TO_LTD / TO_LDTBLK



2/3 Service Tray

Product code: TA_LDTBLK002
 Material: Black, Lacquered
 Dimensions: 542 x 422 x 50 mm
 21.3 x 16.6 x 2"

Compatible with TO_LTD / TO_LDTBLK



1/3 Service Tray

Product code: TA_LDTBLK003
 Material: Black, Lacquered
 Dimensions: 442 x 271 x 50 mm
 16.6 x 10.7 x 2"

Compatible with TO_LTD / TO_LDTBLK

Craster creates innovative luxury product ranges for premium Hotel, Retail and Restaurant groups. We bring together exceptional design and manufacturing talent and offer a complete product development solution from the inception of the idea to delivery of the product.

All Designs and Images are the sole property of Craster, Ltd.

Email: info@craster.com
 Web: www.craster.com
 Tel: +44 (0) 203 004 4750

Craster Company info:
 VAT Reg No. 599599046
 Registered in England
 Company No: 4503732

craster